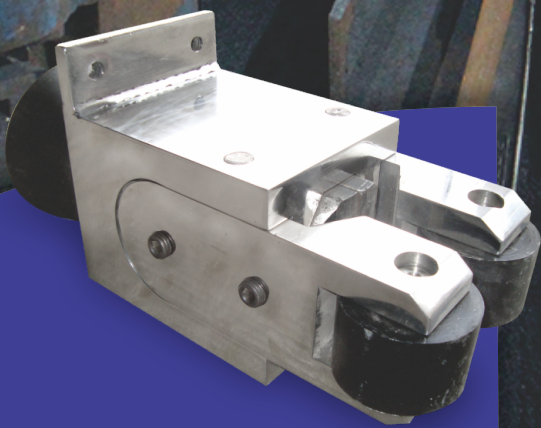


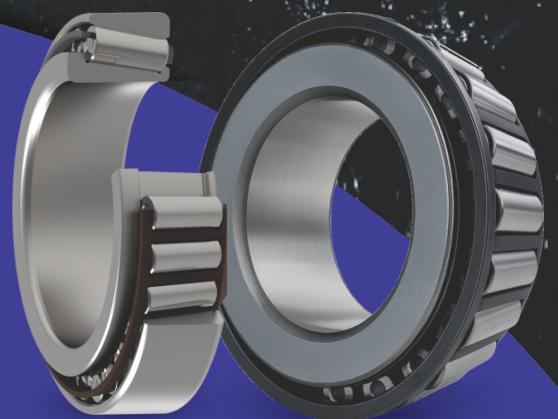


CKA Birla Group |



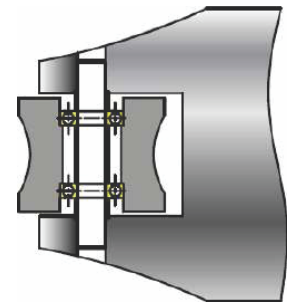
## Wire Guide Box Bearings

Tapered Roller Bearings



## Special Series Tapered Roller Bearings for Guide Box

The guide box bearings go through very harsh operating conditions. Major challenges faced in guide box bearings are:



### Contamination

Contaminants like dirt and water infiltrate bearings, causing accelerated wear and potential failure.

### Frequent Cage Pocket Wear

High contamination and frequent acceleration/declaration leads to cage pocket wear.

### High Speed

Bearings at high speeds and under rapid acceleration experience higher friction and heat. This results in lubrication film depletion and can cause bearing wear.

### Lubricant Washout

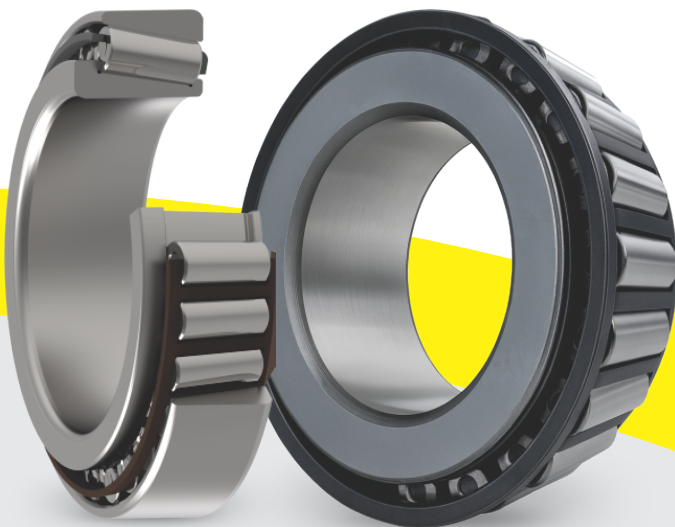
Due to harsh conditions and continuous water flow, lubricant washout is a major problem in guide box applications.

### Frequent Acceleration/Deceleration

High and frequent acceleration/ deceleration impacts the cage and can damage it.

### Corrosion

Exposure to moisture can cause corrosion in bearings, which may lead to failure.

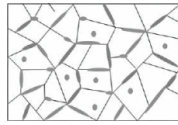


## Improved Surface Finish

- **Reduced Friction:** Smoother surface and precise accuracy minimize friction which enhances bearing performance at higher speeds.
- **Better Lubrication:** Improved surface finish helps in better lubrication film formation which enhances bearing life.

\*\*Grease and seal applicable for 2RSA or ZZ bearings.

## Features & Benefits



### Special TF Heat Treatment

- **Increased Surface Hardness:** Enhances wear resistance and durability under high friction conditions.
- **Improved Fatigue Strength:** Extends the operational life by withstanding repeated stress and mechanical loads generated due to frequent re-entry.
- **Enhanced Corrosion Resistance:** This special heat treatment improves resistance to corrosion, beneficial in harsh environments of guide box applications.
- **Longer Lifespan in Compromised Lubrication:** TF heat treated bearings perform well in poorly lubricated and contaminated conditions, like guide box, extending their lifespan.

### High Strength Polymer Cage



- **Lightweight:** Specially designed polymer cages are significantly lighter, which reduces the overall weight of the bearing assembly and improve performance in high-speed applications.
- **Wear resistance:** Specially designed cage material provides very good protection against wear in contaminated environment. This avoids the cage pocket wear and gives superior life.
- **Self-Lubricating Properties:** This cage has inherent self-lubricating capabilities, which is beneficial in environments with marginal lubrication.
- **High Elasticity:** The material's elasticity allows it to absorb shocks and vibrations, making it suitable for applications with high acceleration and deceleration like guide box bearings.

## NBC Bearings Solutions for Tapered Roller Bearings

| Part No.     | ID (mm) | OD (mm) | Width (mm) | Cr (kN) | Cor (kN) |
|--------------|---------|---------|------------|---------|----------|
| ASTB30202T3X | 15      | 35      | 11.75      | 16.10   | 14.80    |
| ASTB30302T3X | 15      | 42      | 14.25      | 21.60   | 18.90    |
| ASTB32303T3X | 17      | 47      | 20.25      | 34.60   | 33.40    |
| ASTB32304T3X | 20      | 52      | 22.25      | 42.20   | 42.90    |
| ASTB30203T3X | 17      | 40      | 13.25      | 20.7    | 21.9     |
| ASTB30204T3X | 20      | 47      | 15.25      | 29.5    | 30.6     |
| ASTB30303T3X | 17      | 47      | 15.25      | 27.1    | 24.2     |
| ASTB32008T3X | 40      | 68      | 19         | 49.40   | 66.60    |
| ASTB33112T3X | 60      | 100     | 30         | 112     | 164      |
| ASTB33212T3X | 60      | 110     | 38         | 160     | 222      |
| ASTB33206T3X | 30      | 62      | 25         | 66,8    | 80       |
| ASTB32208T3X | 40      | 80      | 24.75      | 77.3    | 90.5     |
| ASTB32209T3X | 45      | 85      | 24.75      | 80      | 96.9     |
| ASTB32308T3X | 40      | 90      | 35.25      | 116.9   | 141.1    |
| ASTB32309T3X | 45      | 100     | 38.25      | 147     | 181      |
| ASTB33205T3X | 25      | 52      | 22         | 47      | 55.8     |
| ASTB33208T3X | 40      | 80      | 32         | 106     | 136      |
| ASTB32005T3X | 25      | 47      | 15         | 27.7    | 33.7     |
| ASTB32305T2X | 25      | 62      | 25.25      | 62.9    | 66.3     |

## Other Products from NBC Bearings

Since the challenges faced by industry are many, NBC offers a diverse range of exceptional bearings.



Deep Groove Ball Bearing



Tapered Roller Bearing



Cylindrical Roller Bearing



Needle Roller Bearing



Spherical Roller Bearing Steel Cage



Double Row Tapered Roller Bearing



Double Row Angular Contact Bearing



Sealed Spherical Roller Bearing



Spherical Roller Bearing Brass Cage



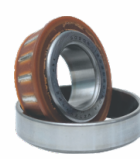
Spherical Roller Thrust Bearing



Insulated Ball Bearing



Hybrid Ball Bearing



Oil Impregnated Bearing



4 Row Cylindrical Roller Bearing Steel Cage



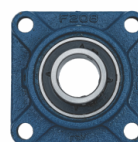
4 Row Cylindrical Roller Bearing Brass Cage



4 Row Tapered Roller Bearing



4 Row Sealed Tapered Roller Bearing



Pillow Block UCF



Pillow Block UCP

NBC bearings are available in sizes from 06 mm bore to 2000 mm outer diameter.

CKA Birla Group |



National Engineering Industries Ltd

Khatipura Road, Jaipur, +91 141 2223 221 neisales@nbcbearings.in  
Rajasthan, India 302 006 +91 141 2222 259 www.nbcbearings.com

Toll free: 1800 3000 6222

[in](#) [x](#) [f](#) [v](#) [y](#) /nbcbearings

